

# EP500

PURE EPOXY

REVISION R03.00 24.11.2022

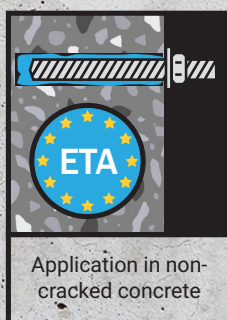


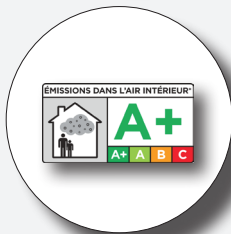
NOTE: THIS TECHNICAL DATA SHEET REPLACES ALL PREVIOUS VERSIONS. THE INSTRUCTIONS IN THIS DOCUMENTATION ARE BASED ON OUR TESTS AND EXPERIENCE AND HAVE BEEN PREPARED TO THE BEST OF OUR KNOWLEDGE AND CONSCIENCE. DUE TO THE VARIETY OF DIFFERENT MATERIALS AND SUBSTRATES AND THE MANY DIFFERENT POSSIBLE APPLICATIONS BEYOND OUR CONTROL, WE ASSUME NO RESPONSIBILITY FOR THE RESULTS ACHIEVED. SINCE THE CONSTRUCTION AND NATURE OF THE SUBSTRATE AND THE PROCESSING CONDITIONS ARE BEYOND OUR CONTROL, WE DO NOT ACCEPT ANY LIABILITY FOR THIS PUBLICATION. IN ANY CASE, IT IS RECOMMENDED TO CARRY OUT APPROPRIATE TESTS BEFORE USE.

## Content

Page

1. General	3
Product description	3
Properties and benefits	3
Applications samples	3
Handling and storage	3
Applications and intended use	3
Mortar properties	4
Reactivity	4
2. Anchorage in concrete	5
Installation instructions	5
Installation accessories	8
Setting parameter	9
Recommended loads	10
4. Post-installed rebar	12
Installation instruction	12
Cleaning and installation tools- concrete	15
Design anchorage and lap length	19
Fire resistance - Overlapping joints	23
Beam to wall connection (anchoring)	27
4. Chemical resistance	35





# 1. General

## Product description

The EP500 mortar is a 2-component reaction resin mortar based on a pure epoxy and will be delivered in a exclusive 2-C cartridge system. This high performance product may be used in combination with a hand-, battery-, or pneumatic tool and a static mixer. It was designed especially for the anchoring of threaded rods and reinforcing bars into concrete.

## Properties and benefits

- European Technical Assessment for bonded fasteners acc. to EAD 330499-01-0601 (Option 1): ETA-20/0201
- European Technical Assessment for post-installed rebar acc. to EAD 330087-00-0601: ETA-20/0200
- For heavy anchoring - doweling and post-installed rebar connection
- Overhead application
- waterfilled bore holes
- Suitable for attachment points with small edge- and axial distances due to an anchoring free of expansion forces
- High chemical resistance
- Low odour
- High bending and pressure strength
- Cartridge can be reused up to the end of the shelf life by replacing the static mixer or resealing cartridge with the sealing cap
- state-of-the-art ingredients, complies with the latest REACH regulations, free off Phenol, (CAS# 108-95-2), DETA/TETA (CAS# 111-40-0), Benzyl alcohols (CAS# 100-51-6), Bisphenol-A (CAS# 80-05-7)

## Applications samples

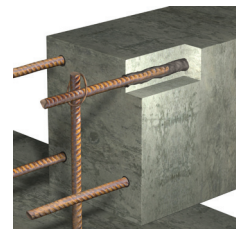
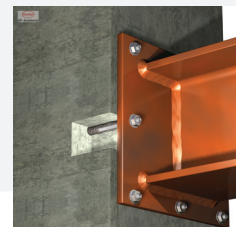
Suitable for the fixation of facades, roofs, wood constructions, metal constructions; metal profiles, columns, beams, consoles, railings, sanitary devices, cable trays, piping, post-installed rebar connection (reconstruction or reinforcement), etc.

## Handling and storage

- Storage: store in a cold and dark place, storage temperature: from +5°C up to +35°C
- Shelf life: 24 months for cartridges (ST)

## Applications and intended use

- Base material: cracked and non-cracked concrete, light-concrete, porous-concrete, solid masonry, hollow brick, natural stone (Attention! natural stone, can discolour; shall be checked in advance).
- Anchor elements: Threaded rods (zinc plated or hot dip, stainless steel and high corrosion resistance steel), reinforcing bars, internal threaded rods, profiled rod, steel section with undercuts (e.g. perforated section)
- Temperature range: Installation temperature +5°C up to +40°C; Cartridge temperature min. +5°C; optimal +20°C; Base material temperature after full curing -40°C bis +72°C





### Mortar properties

Properties	Test Method	Result
UV resistance	-	Pass
Watertightness	DIN EN 12390-8	0 mm
Temperature stability		≤ 80°C
pH-value		> 12
Compressive strength	EN 196 Teil1	112 N / mm <sup>2</sup>
Flexural strength		46,0 N / mm <sup>2</sup>
Axial tensile strength	DIN EN ISO 527-2	24,3 N / mm <sup>2</sup>
E modulus		5.275 N / mm <sup>2</sup>
Elongation at fracture		1,1 %
Degree of shrinkage	DIN 52450	≤ 1,4 ‰
Hardness Shore A	DIN EN ISO 868	95,8
Hardness Shore D		84,6
Density		≤ 1;50 kg / dm <sup>3</sup>

### Reactivity

Temperature of base material	Gelling- and working time	Full curing time in dry base material <sup>1)</sup>
+5 °C to +9°C	80 min	60 h
+ 10 °C to +14°C	60 min	48 h
+ 15 °C to +19°C	40 min	24 h
+ 20 °C to +24°C	30 min	12 h
+ 25 °C to +34°C	12 min	10 h
+ 35 °C to +39°C	8 min	7 h
+40°C	8 min	4 h
Cartridge temperature	+5 °C to +40 °C	

<sup>1)</sup> The curing times in wet concrete has to be doubled.



## 2. Anchorage in concrete

### Installation instructions

Drilling of the bore hole (HD, CD; HDB)	
	<p><b>1a.</b> Hammer drilling (HD) or compressed air drilling (CD). Drill a hole into the base material to the size and embedment depth required by the selected anchor (see page 8) Proceed with Step 2. In case of aborted drill hole, the drill hole shall be filled with mortar.</p>
	<p><b>2a.</b> Hollow drill bit system (HDB) Drill a hole into the base material to the size and embedment depth required by the selected anchor (see page 9). This drilling system removes the dust and cleans the bore hole during drilling (all conditions). Proceed with Step 3. In case of aborted drill hole, the drill hole shall be filled with mortar.</p>
<p>Attention! Standing water must be removed before cleaning.</p>	
<p>MAC: Cleaning for dry and wet bore hole with diameter <math>d_0 \leq 20\text{mm}</math> and bore hole depth <math>h_0 \leq 10d_{\text{nom}}</math> (uncracked concrete only!)</p>	
	<p><b>2a.</b> Starting from the bottom or back of the bore hole, blow the hole clean with handpump (see page 8) a minimum of four times until return air stream is free of noticeable dust.</p>
	<p><b>2b.</b> Check brush diameter (see page 8). Brush the hole with an appropriate sized wire brush <math>&gt; d_{\text{b,min}}</math> (see page 8) a minimum of four times in a twisting motion. If the bore hole ground is not reached with the brush, a brush extension must be used.</p>
	<p><b>2c.</b> Finally blow the hole clean again with handpump (see page 8) a minimum of four times until return air stream is free of noticeable dust.</p>
<p>After cleaning, the bore hole has to be protected against re-contamination in an appropriate way, until dispensing the mortar in the bore hole. If necessary, the cleaning has to be repeated directly before dispensing the mortar. In-flowing water must not contaminate the bore hole again.</p>	



<p>CAC: Cleaning for dry, wet and water-filled bore holes with all diameter in uncracked and cracked concrete</p>	
	<p><b>2a.</b> Starting from the bottom or back of the bore hole, blow the hole clean with compressed air (min. 6 bar) (see page 8) a minimum of two times until return air stream is free of noticeable dust. If the bore hole ground is not reached an extension must be used.</p>
	<p><b>2b.</b> Check brush diameter (see page 8). Brush the hole with an appropriate sized wire brush <math>&gt; d_{b,min}</math> (see page 8) a minimum of two times in a twisting motion. If the bore hole ground is not reached with the brush, a brush extension must be used.</p>
	<p><b>2c.</b> Finally blow the hole clean again with compressed air (min. 6 bar) (see page 8) a minimum of two times until return air stream is free of noticeable dust. If the bore hole ground is not reached an extension must be used.</p>
	<p><b>3.</b> Attach a supplied static-mixing nozzle to the cartridge and load the cartridge into the correct dispensing tool. After every working interruption longer than the recommended working time (see page 4) as well as for new cartridges, a new static-mixer shall be used.</p>
	<p><b>4.</b> Prior to inserting the anchor rod into the filled bore hole, the position of the embedment depth shall be marked on the anchor rods.</p>
	<p><b>5.</b> Prior to dispensing into the anchor hole, squeeze out separately a minimum of three full strokes and discard non-uniformly mixed adhesive components until the mortar shows a consistent grey or red colour.</p>
	<p><b>6.</b> Starting from the bottom resp. back of the cleaned anchor hole fill the hole up to approximately two-thirds with adhesive. Slowly withdraw of the static mixing nozzle as the hole is filled avoids creating air pockets. If the bore hole ground is not reached with the static-mixing nozzle, a appropriate extension must be used. Observe the gel-/ working times given (see page 4).</p>
	<p><b>7.</b> Piston plugs shall be used acc. to table on page 9 for the following application:</p> <ul style="list-style-type: none"> <li>• Horizontal assembly (horizontal direction) and ground erection (vertical downwards): Drill bit-<math>\varnothing d_0 \geq 18</math> mm and embedment depth <math>h_{ef} &gt; 250</math>mm</li> <li>• Overhead assembly (vertical upwards direction): Drill bit-<math>\varnothing d_0 \geq 18</math> mm.</li> </ul> <p>Assemble mixing nozzle, mixer extension and piston plug before injecting mortar.</p>

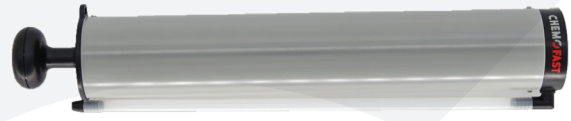


	<p><b>8.</b> Insert piston plug to back of the hole and inject adhesive. If the bottom or back of the anchor hole is not reached, an appropriate extension nozzle must be used. During injection the piston plug is naturally pushed out of the bore-hole by the back pressure of the mortar. Observe the gel-/working times given in the table on page 4.</p>
	<p><b>9.</b> Push the fixing element into the anchor hole while turning slightly to ensure positive distribution of the adhesive until the embedment mark has reached the surface level.</p> <p>The anchor should be free of dirt, grase, oil or other foreign material.</p>
	<p><b>10.</b> After inserting the anchor, the annular gab between anchor rod and concrete, in case of a push through installation additionally also the fixture, must be complete filled with mortar. If excess mortar is not visible at the top of the hole, the requirement is not fulfilled and the application has to be renewed.</p>
	<p><b>11.</b> For overhead application the anchor rod shall be fixed (e. g. wedges) until the mortar has started to harden.</p>
	<p><b>12.</b> Allow the adhesive to cure to the specified time prior to applying any load or torque. Do not move or load the anchor until it is fully cured (see page 4).</p>
	<p><b>13.</b> After full curing, the add-on part can be installed with up to the max. torque (see page 9) by using a calibrated torque wrench. It can be optional filled the annular gap between anchor and fixture with mortar. Therefor substitute the washer by the filling washer and connect the mixer reduction nozzle to the tip of the mixer. The annular gap is filled with mortar, when mortar oozes out of the washer.</p>



### Installation accessories

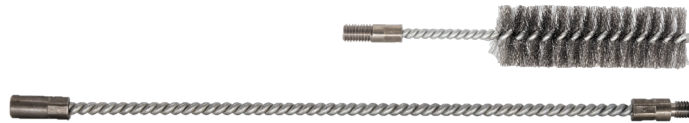
MAC - Hand pump (volume 750 ml)  
 Drill bit diameter ( $d_0$ ): up to 20 mm  
 Drill hole depth ( $h_0$ ):  $< 10 d_{nom}$   
 Uncracked concrete only



CAC - Rec. compressed air tool (min 6 bar)  
 Drill bit diameter ( $d_0$ ): all diameters



Brush RBT and brush extension



HDB – Hollow drill bit system  
 Drill bit diameter ( $d_0$ ): all diameters  
 The hollow drill bit system contains the Heller Duster Expert hollow drill bit and a class M vacuum with minimum negative pressure of 253 hPa and flow rate of minimum 150 m<sup>3</sup>/h (42 l/s).



Threaded rod	Rebar	Drill bit - $d_0$ HD	Brush			Piston plug	Installation direction and use of piston plug		
[mm]	[mm]	[mm]	$d_b$ Brush- $\emptyset$ [-]	$d_{b,min}$ Brush- $\emptyset$ [mm]	$d_{b,min}$ min. Brush- $\emptyset$ [mm]	[-]			
M8	8	10	RBT 10	11,5	10,5	No piston plug required			
M10	8 / 10	12	RBT 12	13,5	12,5				
M12	10 / 12	14	RBT 14	15,5	14,5				
-	12	16	RBT 16	17,5	16,5				
M16	14	18	RBT 18	20,0	18,5	VS 18	$h_{ef} > 250 \text{ mm}$	$h_{ef} > 250 \text{ mm}$	all
-	16	20	RBT 20	22,0	20,5	VS 20			
M20	-	22	RBT 22	24,0	22,5	VS 22			
-	20	25	RBT 25	27,0	25,5	VS 25			
M24	-	28	RBT 28	30,0	28,5	VS 28			
M27	24 / 25	30	RBT 30	31,8	30,5	VS 30			
-	24 / 25	32	RBT 32	34,0	32,5	VS 32			
M30	28	35	RBT 35	37,0	35,5	VS 35			
-	32	40	RBT 40	43,5	40,5	VS 40			
M33	-	38	RBT 38	40,0	38,8	VS 38			
M36	-	42	RBT 42	44,0	42,8	VS 42			
-	36	45	RBT 45	47,0	45,8	VS 45			



Threaded rod	Rebar	Drill bit - Ø HD	d <sub>b</sub> Brush-Ø		d <sub>b,min</sub> min. Brush-Ø	Piston plug	Installation direction and use of piston plug		
[mm]	[mm]	[mm]	[-]	[mm]	[mm]	[-]			
M39	-	45	RBT 45	47,0	45,8	VS 45	h <sub>ef</sub> > 250 mm	h <sub>ef</sub> > 250 mm	all
-	40	50	RBT 50	52,0	50,8	VS 50			
M42	-	52	RBT 52	54,0	52,8	VS 52			
M48	-	60	RBT 60	62,0	60,8	VS 60			

### Setting parameter

Anchor size			M8	M10	M12	M16	M20	M24	M27	M30	M33	M36	M39	M42	M48
Outer diameter of anchor	d = d <sub>nom</sub>	[mm]	8	10	12	16	20	24	27	30	33	36	39	42	48
Nominal drill hole diameter	d <sub>0</sub>	[mm]	10	12	14	18	22	28	30	35	38	42	45	52	60
Effective embedment depth	h <sub>ef,min</sub>	[mm]	60	60	70	80	90	96	108	120	132	144	156	168	192
	h <sub>ef,max</sub>	[mm]	160	200	240	320	400	480	540	600	660	720	780	840	960
Diameter of clearance hole in the fixture	Pre-positioned anchorage d <sub>f</sub>	[mm]	9	12	14	18	22	26	30	33	36	39	42	45	52
	In-place anchorage d <sub>f</sub>	[mm]	12	14	16	20	24	30	33	40	40	44	47	54	62
Maximum torque moment	T <sub>inst</sub> ≤	[Nm]	10	20	35	60	100	170	250	300	330	360	390	460	550
Minimum thickness of member	h <sub>min</sub>	[mm]	h <sub>ef</sub> + 30 mm ≥ 100 mm			h <sub>ef</sub> + 2d <sub>0</sub>									
Minimum spacing	S <sub>min</sub>	[mm]	40	50	60	75	95	115	125	140	165	180	195	210	240
Minimum edge distance	C <sub>min</sub>	[mm]	35	40	45	50	60	65	75	80	165	180	195	210	240

Rebar size		ø8 <sup>1)</sup>	ø10 <sup>1)</sup>	ø12 <sup>1)</sup>	ø14	ø16	ø20	ø24	ø25	ø28	ø32	ø36	ø40	
Outer diameter of anchor	d = d <sub>nom</sub>	[mm]	8	10	12	14	16	20	25	25	28	32	40	
Nominal drill hole diameter	d <sub>0</sub>	[mm]	10   12	12   14	14   16	18	20	25	32	32	35	40	50	
Effective embedment depth	h <sub>ef,min</sub>	[mm]	60	60	70	75	80	90	96	100	112	128	144	240
	h <sub>ef,max</sub>	[mm]	160	200	240	280	320	400	480	500	560	640	720	800
Minimum thickness of member	h <sub>min</sub>	[mm]	h <sub>ef</sub> + 30 mm ≥ 100 mm			h <sub>ef</sub> + 2d <sub>0</sub>								
Minimum spacing	S <sub>min</sub>	[mm]	40	50	60	70	75	95	120	120	130	150	180	200
Minimum edge distance	C <sub>min</sub>	[mm]	35	40	45	50	50	60	70	70	75	85	180	200

<sup>1)</sup> Both nominal drill hole diameters d<sub>0</sub> can be used.



## Recommended loads

### Threaded rod

The recommended loads are only valid for single anchors for a roughly design, if the following conditions are valid:

- $c \geq 1,5 \times h_{ef}$      $s \geq 3,0 \times h_{ef}$      $h \geq 2 \times h_{ef}$
- $\psi_{sus} = 1,0$ ; percentage of dead load  $\leq \psi_{sus}^0$  see table below
- The recommended loads have been calculated using the partial safety factors for resistances stated in the ETA and with a partial safety factor for actions of  $\gamma_f=1.4$ .  
The partial safety factor for seismic action is  $\gamma_1 = 1,0$ .

If the conditions are not fulfilled the loads must be calculated acc. to EN 1992-4.

For further details observe ETA-20/0201.

Recommended loads for a working life of 50 years					M8	M10	M12	M16	M20	M24	M27	M30	M33 <sup>3)</sup>	M36 <sup>3)</sup>	M39 <sup>3)</sup>	M42 <sup>3)</sup>	M48 <sup>3)</sup>	
Recommended tension load	40°C / 24°C <sup>1)</sup> $\psi_{sus}^0 = 0,60$	uncracked	$N_{rec,stat}$	[kN]	14,4	20,0	27,0	32,7	51,9	71,3	92,6	103,9	95,8	109,6	123,9	144,0	176,0	
		cracked	$N_{rec,stat}$	[kN]	4,8	6,7	9,9	15,0	25,4	32,3	43,3	51,9	67,0	76,7	79,2	94,2	123,1	
	60°C / 35°C <sup>1)</sup> $\psi_{sus}^0 = 0,60$	uncracked	$N_{rec,stat}$	[kN]	6,8	9,6	14,1	20,3	34,5	48,5	64,9	74,2	NPA					
		cracked	$N_{rec,stat}$	[kN]	3,4	4,8	7,1	10,7	18,2	24,2	32,5	38,9						
	70°C/43°C <sup>1)</sup> $\psi_{sus}^0 = 0,60$	uncracked	$N_{rec,stat}$	[kN]	4,8	6,7	9,9	13,9	23,6	32,3	43,3	51,9						
		cracked	$N_{rec,stat}$	[kN]	2,4	3,4	4,9	7,5	12,7	16,2	21,6	26,0						
	Recommended shear load without lever arm <sup>2)</sup>	uncracked	$V_{rec,stat}$	[kN]	9,7	11,9	16,5	20,8	34,1	48,1	63,5	72,3	93,3	106,1	120,3	140,4	174,6	
		cracked	$V_{rec,stat}$	[kN]	6,7	8,4	11,7	14,8	24,2	34,0	45,0	51,2	66,1	75,2	85,2	99,5	123,7	
Embedment depth	$h_{ef}$	[mm]	80	90	110	125	170	210	250	270	320	350	380	420	480			
Edge distance	$c \geq$	[mm]	120	135	165	188	255	315	375	405	480	525	570	630	720			
Axial distance	$s \geq$	[mm]	240	270	330	375	510	630	750	810	960	1050	1140	1260	1440			

1) Short term temperature/ Long term temperature.

2) Shear loads are valid for all specified temperature ranges.

3) Application is not covered by the ETA-20/0201.

$N_{rec,stat}$ ,  $V_{rec,stat}$  = Recommended load under static and quasi-static action

NPA = no performance accessed



**Rebar**

The recommended loads are only valid for single anchors for a roughly design, if the following conditions are valid:

- $c \geq 1,5 \times h_{ef}$      $s \geq 3,0 \times h_{ef}$      $h \geq 2 \times h_{ef}$
- $\psi_{sus} = 1,0$ ; percentage of dead load  $\leq \psi_{sus}^0$  see table below
- The recommended loads have been calculated using the partial safety factors for resistances stated in the ETA and with a partial safety factor for actions of  $\gamma_f=1.4$ . The partial safety factor for seismic action is  $\gamma_1 = 1,0$ .

If the conditions are not fulfilled the loads must be calculated acc. to EN 1992-4.  
For further details observe ETA-20/0200.

Recommended loads for a working life of 50 years			Ø8	Ø10	Ø12	Ø14	Ø16	Ø20	Ø24	Ø25	Ø28	Ø32	Ø36 <sup>3)</sup>	Ø40 <sup>3)</sup>		
Recommended tension load	40°C / 24°C <sup>1)</sup> $\psi_{sus}^0 = 0,60$	uncracked	$N_{rec,stat}$ [kN]	9,6	13,5	19,3	20,6	23,4	37,1	49,1	50,9	66,1	74,2	109,6	123,9	
		cracked	$N_{rec,stat}$ [kN]	4,1	6,7	9,9	11,2	13,9	21,8	31,5	33,7	41,1	50,8	74,1	86,8	
	60°C / 35°C <sup>1)</sup> $\psi_{sus}^0 = 0,60$	uncracked	$N_{rec,stat}$ [kN]	6,5	9,1	13,4	14,6	18,2	30,9	39,4	42,1	56,1	69,2	NPA		
		cracked	$N_{rec,stat}$ [kN]	2,7	4,3	6,3	7,7	8,5	14,5	21,0	22,4	26,2	32,3			
	70°C/43°C <sup>1)</sup> $\psi_{sus}^0 = 0,60$	uncracked	$N_{rec,stat}$ [kN]	4,1	5,8	8,5	10,3	12,8	20,0	28,9	30,9	37,4	46,2			
		cracked	$N_{rec,stat}$ [kN]	1,7	2,4	3,5	4,3	5,3	9,1	13,1	14,0	18,7	23,1			
Recommended shear load without lever arm <sup>2)</sup>	uncracked	$V_{rec,stat}$ [kN]	6,7	10,5	14,8	18,0	20,8	34,1	46,4	48,4	63,8	73,0	106,1			121,3
	cracked	$V_{rec,stat}$ [kN]	4,8	6,7	9,9	12,0	14,8	24,2	32,8	34,3	45,2	51,7	75,2			86,0
Embedment depth	$h_{ef}$ [mm]		80	90	110	115	125	170	205	210	250	270	350	380		
Edge distance	$c \geq$ [mm]		120	135	165	172,5	187,5	255	307,5	315	375	405	525	570		
Axial distance	$s \geq$ [mm]		240	270	330	345	375	510	615	630	750	810	1050	1140		

1) Short term temperature/ Long term temperature.

2) Shear loads are valid for all specified temperature ranges.

3) Application is not covered by the ETA-20/0200.

$N_{rec,stat}$ ,  $V_{rec,stat}$  = Recommended load under static and quasi-static action

NPA = no performance accessed



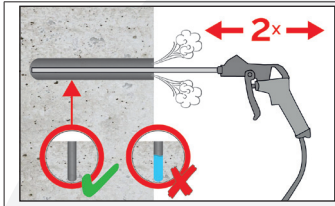
## 4. Post-installed rebar

### Installation instruction

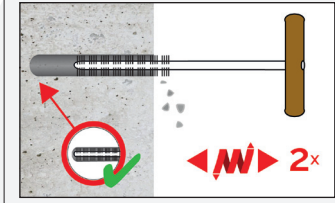
A) Bore hole drilling	
Note: Before drilling, remove carbonated concrete and clean contact areas. in case of aborted drill hole: the drill hole shall be filled with mortar.	
	<b>1a.</b> Hammer (HD) or compressed air drilling (CD). Drill a hole into the base material to the size and embedment depth required by the selected reinforcing bar. Proceed with Step B1.
	<b>1b.</b> Hollow drill bit system (HDB) Drill a hole into the base material to the size and embedment depth required by the selected reinforcing bar. This drill system removes the dust and cleans the bore hole during drilling. Proceed with Step C.
	<b>1c.</b> Diamond drilling (DD). Drill with diamond drill a hole into the base material to the size and embedment depth required by the selected anchor. Proceed with Step B2.
Attention! Standing water in the bore hole must be removed before cleaning.	
B1) Bore hole cleaning	
MAC: Cleaning for dry and wet bore hole with diameter $d_0 \leq 20\text{mm}$ and bore hole depth $h_0 \leq 10d_{\text{nom}}$ with drilling method HD/CD	
	<b>2a.</b> Starting from the bottom or back of the bore hole, blow the hole clean with handpump (see page 15) a minimum of four times until return air stream is free of noticeable dust.
	<b>2b.</b> Check brush diameter (see page 16 - 17). Brush the hole with an appropriate sized wire brush $> d_{\text{b,min}}$ (see page 15) a minimum of four times in a twisting motion. If the bore hole ground is not reached with the brush, a brush extension must be used.
	<b>2c.</b> Finally blow the hole clean again with handpump (see page 15) a minimum of four times until return air stream is free of noticeable dust.
After cleaning, the bore hole has to be protected against re-contamination in an appropriate way, until dispensing the mortar in the bore hole. If necessary, the cleaning has to be repeated directly before dispensing the mortar. In-flowing water must not contaminate the bore hole again.	



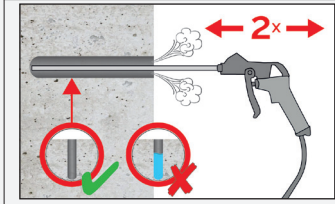
CAC: Cleaning for all bore hole diameter and bore hole depth with drilling method HD and CD	
	<p><b>2a.</b> Starting from the bottom or back of the bore hole, blow the hole clean with compressed air (min. 6 bar) (see page 15) a minimum of two times until return air stream is free of noticeable dust. If the bore hole ground is not reached an extension shall be used.</p>
	<p><b>2b.</b> Check the brush diameter (see page 16 - 17). Brush the hole with an appropriate sized wire brush <math>&gt; d_{b,min}</math> (see page 16 - 17) a minimum of two times. If the borehole ground is not reached with the brush, a brush extension shall be used.</p>
	<p><b>2c.</b> Finally blow the hole clean again with compressed air (min. 6 bar) (see page 15) a minimum of two times until return air stream is free of noticeable dust. If the bore hole ground is not reached an extension shall be used.</p>
<p>After cleaning, the bore hole has to be protected against re-contamination in an appropriate way, until dispensing the mortar in the bore hole. If necessary, the cleaning has to be repeated directly before dispensing the mortar. In-flowing water must not contaminate the bore hole again.</p>	
B2) Bore hole cleaning	
SPCAC: Cleaning for all bore hole diameter and bore hole depth with drilling method DD	
	<p><b>2a.</b> Rinsing with water until clear water comes out..</p>
	<p><b>2b.</b> Check the brush diameter (see page 16 - 17). Brush the hole with an appropriate sized wire brush <math>&gt; d_{b,min}</math> (see page 16 - 17) a minimum of two times. If the borehole ground is not reached with the brush, a brush extension shall be used.</p>
	<p><b>2c.</b> Rinsing again with water until clear water comes out.</p>
<p>Attention! Standing water in the bore hole must be removed before cleaning.</p>	



**2d.** Starting from the bottom or back of the bore hole, blow the hole clean with compressed air (min. 6 bar) (see page 15) a minimum of two times until return air stream is free of noticeable dust. If the bore hole ground is not reached an extension shall be used



**2e.** Check the brush diameter (see page 16 - 17). Brush the hole with an appropriate sized wire brush  $> d_{b,min}$  (see page 16 - 17) a minimum of two times. If the borehole ground is not reached with the brush, a brush extension shall be used.



**2f.** Finally blow the hole clean again with compressed air (min. 6 bar) (see page 15) a minimum of two times until return air stream is free of noticeable dust. If the bore hole ground is not reached an extension shall be used.

After cleaning, the bore hole has to be protected against re-contamination in an appropriate way, until dispensing the mortar in the bore hole. If necessary, the cleaning has to be repeated directly before dispensing the mortar. In-flowing water must not contaminate the bore hole again.

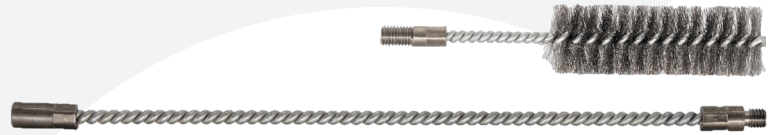


## Cleaning and installation tools- concrete

Rec. compressed air tool hand slide valve  
(min 6 bar)



Brush RBT and brush extension



Hand pump (volume 750 ml)



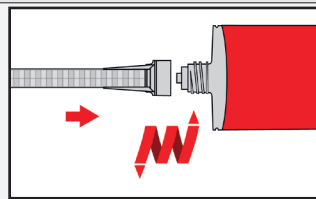
SDS Plus Adapter



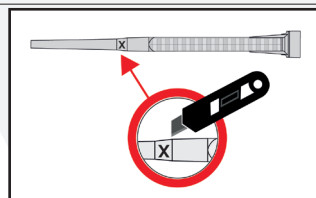
HDB - Hollow drill bit



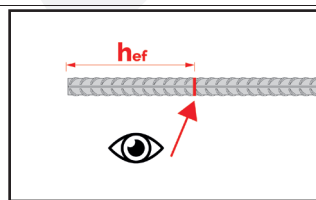
### C) Preparation of bar and cartridge



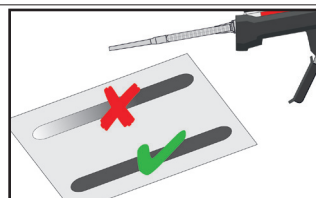
**3.** Attach the static mixer tightly onto the cartridge and insert the cartridge into a suitable dispensing tool. For every working interruption longer than the recommended working time (see page 4) as well as for new cartridges, a new static-mixer shall be used.



**3a.** In case of using the mixer extension VL16/1,8 the tip on the mixer nozzle has to be cut off at position "X".

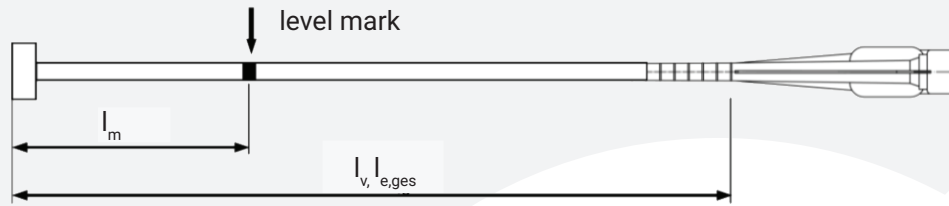


**4.** Prior to inserting the reinforcing bar into the filled bore hole, the position of the embedment depth shall be marked (e.g. with tape) on the reinforcing bar and insert bar in empty hole to verify hole and depth  $l_v$  (see page 16). The bar should be free of dirt, grease, oil or other foreign material.



**5.** Prior to dispensing into the anchor hole, squeeze out separately the mortar until it shows a consistent grey or red colour, but a minimum of three full strokes and discard non-uniformly mixed adhesive components.

### D) Filling the bore hole



Injection tool must be marked by mortar level mark  $l_m$  and anchorage depth  $l_v$  resp.  $l_{e,ges}$  with tape or marker.

Quick estimation:  $l_m = 1/3 * l_v$

Continue injection until mortar level mark  $l_m$  becomes visible.

Optimum mortar volume:  $l_m = l_v \text{ rep. } l_{e,ges} * (1,2 * \varnothing^2 / d_0^2 * 0,2)$  [mm]

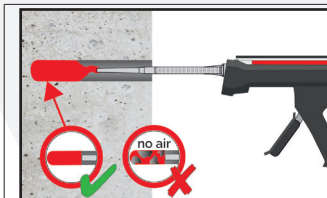
**Brushes, piston plugs, maximum embedment depth and mixer extension, hammer (HD), diamond (DD) and compressed air drilling (CD)**

Bar size $\varnothing$	Drill bit- $\varnothing$			$d_b$ Brush - $\varnothing$		$d_{b,min}$ min. Brush - $\varnothing$	Piston plug	Cartridge: 440 ml or 585 ml				Cartridge: 1400 ml	
								Hand or battery tool		Pneumatic tool		Hand or battery tool	
	HD	DD	CD	$l_{v,max}$	Mixer extension	$l_{v,max}$	Mixer extension	$l_{v,max}$	Mixer extension				
[mm]	[mm]	[mm]	[mm]	[-]	[mm]	[mm]	[Nr.]	[cm]	[-]	[cm]	[-]	[cm]	[-]
8	10	-	-	RB10	11,5	10,5	-	250		250		250	VL 10/0,75 or VL 16/1,8
	12	-	-	RB12	13,5	12,5	-	700		800		800	
10	12	-	-	RB12	13,5	12,5	-	250		250		250	VL 16/1,8
	14	-	-	RB14	15,5	14,5	VS14	700		1000		1000	
12	14	-	-	RB14	15,5	14,5	VS14	250		250		250	VL 16/1,8
	16		-	RB16	17,5	16,5	VS16	700	VL 10/0,75 or VL 16/1,8	1300	VL 10/0,75 or VL 16/1,8	1200	
14	18		-	RB18	20,0	18,5	VS18					1400	
16	20		-	RB20	22,0	20,5	VS20	500	VL 16/1,8	1000	VL 16/1,8	1600	
20	25	-	-	RB25	27,0	25,5	VS25					1000	2000
	-	26	-	RB26	28,0	26,5	VS25						
22	28		-	RB28	30,0	28,5	VS28	500	VL 16/1,8	1000	VL 16/1,8	2000	
24/25	32		-	RB32	34,0	32,5	VS32						
28	35		-	RB35	37,0	35,5	VS35	500	VL 16/1,8	1000	VL 16/1,8	2000	
32/34	40		-	RB40	43,5	40,5	VS40						
36	45		-	RB45	47,0	45,5	VS45	500	VL 16/1,8	1000	VL 16/1,8	2000	
40	-	52	-	RB52	54,0	52,5	VS52						-
	55	-	55	RB55	58,0	55,5	VS55						

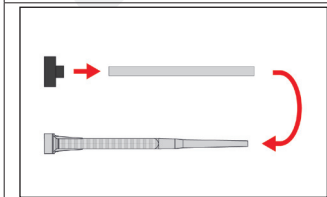


Brushes, piston plugs, maximum embedment depth and mixer extension, hollow drill bit system (HDB)

Bar size Ø	Drill bit-Ø	d <sub>b</sub> Brush - Ø		d <sub>b,min</sub> min. Brush - Ø	Piston plug	Cartridge: 440 ml or 585 ml				Cartridge: 1400 ml	
						Hand or battery tool		Pneumatic tool		Hand or battery tool	
	HDB	l <sub>v,max</sub>	Mixer extension	l <sub>v,max</sub>		Mixer extension	l <sub>v,max</sub>	Mixer extension			
[mm]	[mm]	[-]	[mm]	[mm]	[Nr.]	[cm]	[-]	[cm]	[-]	[cm]	[-]
8	10	No cleaning required			-	250	VL 10/0,75 or VL 16/1,8	250	VL 10/0,75 or VL 16/1,8	250	VL 10/0,75 or VL 16/1,8
	12				-	700		800		800	
10	14				-	250		250		250	
	14				VS14	700		1000		1000	
12	14				VS14	250		250		250	
	16				VS16	700		1000		1000	
14	18				VS18						
16	20				VS20						
20	25				VS25						
22	28				VS28						
24/25	32				VS32	500		1000		1000	
28	35				VS35						
32/34	40				VS40						



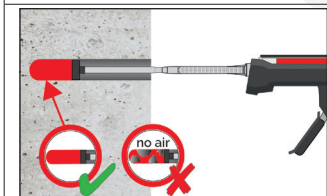
**6a.** Starting from the bottom or back of the cleaned bore hole fill the hole with adhesive, until the level mark at the mixer extension (see below) is visible at the top of the hole. If the bottom or back of the hole is not reached, an appropriate extension nozzle must be used. Slowly withdraw the static mixing nozzle and using a piston plugs during injection of the mortar, helps to avoid creating air pockets. Observe the gel-/working times given on page 4.



**6b.** Piston plugs shall be used according to table on page 16 - 17 for the following application:

- For overhead and horizontal installation
- In vertical downwards direction with bore holes deeper than 240 mm.

Assemble mixing nozzle, mixer extension and piston plug before injecting mortar.



**6c.** Insert piston plug to back of the hole and inject adhesive. If the bottom or back of the anchor hole is not reached, an appropriate extension nozzle must be used. During injection the piston plug will be naturally extruded out of the drill hole by the adhesive pressure. Observe gel-/ working times given on page 4.



E) Inserting the rebar

	<p><b>7.</b> Push the reinforcing bar into the anchor hole while turning slightly to ensure positive distribution of the adhesive until the embedment depth is reached.</p> <p>The bar should be free of dirt, grease, oil or other foreign material.</p>
	<p><b>8.</b> Be sure that the bar is inserted in the bore hole until the embedment mark is at the concrete surface and that excess mortar is visible at the top of the hole. If these requirements are not maintained, the application has to be renewed. For overhead application the anchor rod shall be fixed (e.g. wedges).</p>
	<p><b>8a.</b> For horizontal and overhead installation fix embedded part (e. g. with wedges) until the mortar has started to harden.</p>
	<p><b>9.</b> Observe gelling time <math>t_{gel}</math>. Attend that the gelling time can vary according to the base material temperature (see page 4). It is not allowed to move the bar after gelling time <math>t_{gel}</math> has elapsed. Allow the adhesive to cure to the specified time prior to applying any load. Do not move or load the bar until it is fully cured (attend table on page 4). After full curing time <math>t_{cure}</math> has elapsed, the add-on part can be installed.</p>



## Design anchorage and lap length

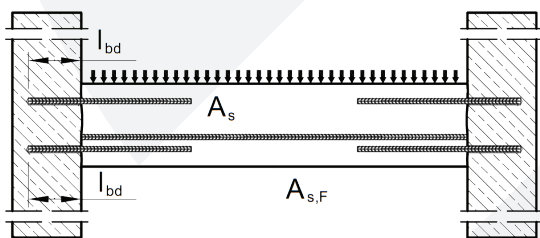
The calculation of the design anchoring lengths of reinforcing bars, if used as end anchoring or as overlapping joint, has to consider the details and provisions of the approval ETA-20/0200 and the EN 1992-1-1:2004+AC:2010.

The design load with corresponding failure mode („pull-out failure“ or „steel failure“) were determined for selected rebar diameters and anchorage lengths. The results for end anchoring and overlapping joints are given in the tables below.

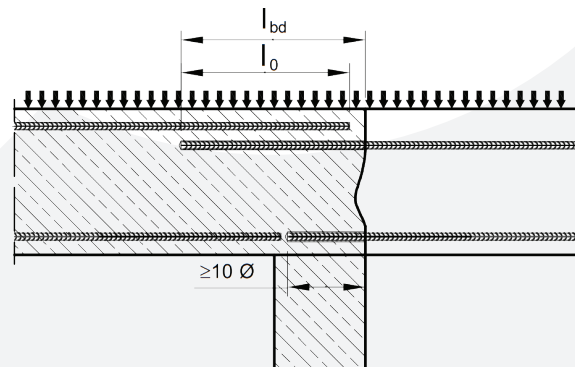
The calculations are based on following assumptions:

- Rebar BSt 500 S,  $f_{yk} = 500 \text{ N/mm}^2$ , Material safety factor of  $\gamma_s = 1,15$
- Concrete class C20/25 and „good bond conditions“ acc. EN 1992-1-1:2004+AC:2010 considered. Rebar diameters  $\leq d = 32 \text{ mm}$ .
- The bond properties of the bars is considered by the coefficients:
  - $\alpha_1 = 1,0$ ; is for the effect of the form of the bars assuming adequate cover; 1,0 for straight rebars
  - $\alpha_2 = 1,0$ ; is for the effect of concrete minimum cover; has to be checked
  - $\alpha_3 = 1,0$ ; is for the effect of confinement by transverse reinforcement; 1,0 for no transverse reinforcement
  - $\alpha_4 = 1,0$ ; is for the influence of one or more welded transverse bars; 1,0 for no welded transverse reinforcement
  - $\alpha_5 = 1,0$ ; is for the effect of the pressure transverse; 1,0 if no transverse pressure is assumed
  - $\alpha_6 = 1,5$ ; is for the percentage of lapped bars relative to the total cross-section area, 1,5 due to the given situation on the construction side

End anchoring of slabs or beams (e.g. designed as simply supported)



Overlapping joint for rebar connections of slabs and beams





Rebar Ø8 - Ø32			End anchoring			Overlapping joint		
<ul style="list-style-type: none"> <li>Concrete class C20/25</li> <li>Rebar BSt 500 S; <math>f_{yk} = 500 \text{ N/mm}^2</math></li> <li>Hammer- (HD), compressed air (CD) or diamond drilling (DD)</li> </ul>			$\alpha_1 = \alpha_2 = \alpha_3 = \alpha_4 = \alpha_5 = 1,0$			$\alpha_1 = \alpha_2 = \alpha_3 = \alpha_4 = \alpha_5 = 1,0$		
			$\alpha_{lb} = 1,0$			$\alpha_6 = 1,5$		
						$\alpha_{lb} = 1,0$		
d	$N_{Rd,s}$	$l_{v,max}$	$l_{bd}$	$N_{Rd}$	Volume Mortar	$l_0$	$N_{Rd}$	Volume Mortar <sup>1)</sup>
[mm]	[kN]	[mm]	[mm]	[kN]	[ml]	[mm]	[kN]	[ml]
Ø8	21,9	800 (800)	113	6,6	9	200	7,7	15
			200	11,6	15	320	12,3	24
			290	16,8	22	440	17,0	33
			378	21,9	29	567	21,9	43
Ø10	34,1	1000 (1000)	142	10,2	13	213	10,2	19
			250	18,1	23	380	18,3	34
			360	26,0	33	550	26,5	50
			473	34,1	43	709	34,1	64
Ø12	49,2	1200 (1000)	170	14,8	18	255	14,8	27
			300	26,0	32	450	26,0	48
			430	37,3	45	650	37,6	69
			567	49,2	60	851	49,2	90
Ø14	66,9	1400 (1000)	198	20,1	24	298	20,1	36
			350	35,4	42	530	35,7	64
			500	50,6	60	760	51,3	92
			662	66,9	80	992	66,9	120
Ø16	87,4	1600 (1000)	227	26,2	31	340	26,2	46
			400	46,2	54	600	46,2	81
			580	67,1	79	860	66,3	117
			756	87,4	103	1134	87,4	154
Ø20	136,6	2000 (1000)	284	41,0	60	425	41,0	90
			500	72,3	106	760	73,2	161
			720	104,0	153	1090	105,0	231
			945	136,6	200	1418	136,6	301
Ø22	165,3	2000 (1000)	312	49,6	22	468	49,6	132
			550	87,4	39	830	88,0	235
			790	125,6	56	1190	126,1	336
			1040	165,3	73	1560	165,3	441
Ø24	196,7	2000 (1000)	340	59,0	144	510	59,0	216
			600	104,0	253	910	105,2	384
			860	149,1	363	1310	151,4	553
			1134	196,7	479	1701	196,7	718
Ø25	213,4	2000 (1000)	354	64,0	133	532	64,0	200
			630	113,8	237	950	114,4	357
			910	164,4	342	1360	163,8	511
			1181	213,4	444	1772	213,4	666
Ø28	267,7	2000 (1000)	397	80,3	165	595	80,3	247
			710	143,6	295	1060	143,0	441
			1020	206,4	424	1520	205,0	632
			1323	267,7	550	1985	267,7	825

<sup>1)</sup> Mortar volume of the overlap joint. The mortar volume of the concrete cover  $c_s$ , at the face of the existing reinforcing steel, was not taken into account.

<sup>2)</sup>  $l_{v,max}$  is limited to 1000 mm, see ETA-20/0200



Rebar Ø8 - Ø32			End anchoring			Overlapping joint		
<ul style="list-style-type: none"> <li>Concrete class C20/25</li> <li>Rebar BSt 500 S; <math>f_{yk} = 500 \text{ N/mm}^2</math></li> <li>Hammer- (HD), compressed air (CD) or diamond drilling (DD)</li> </ul>			$\alpha_1 = \alpha_2 = \alpha_3 = \alpha_4 = \alpha_5 = 1,0$			$\alpha_1 = \alpha_2 = \alpha_3 = \alpha_4 = \alpha_5 = 1,0$		
			$\alpha_{lb} = 1,0$			$\alpha_6 = 1,5$		
						$\alpha_{lb} = 1,0$		
d	$N_{Rd,s}$	$l_{v,max}$	$l_{bd}$	$N_{Rd}$	Volume Mortar	$l_0$	$N_{Rd}$	Volume Mortar <sup>1)</sup>
[mm]	[kN]	[mm]	[mm]	[kN]	[ml]	[mm]	[kN]	[ml]
Ø32	349,7	2000 (1000)	454	104,9	246	681	104,9	369
			810	187,3	440	1120	172,6	608
			1160	268,2	630	1560	240,5	847
			1512	349,7	821	2000 <sup>2)</sup>	308,3	1086

<sup>1)</sup> Mortar volume of the overlap joint. The mortar volume of the concrete cover  $c_1$ , at the face of the existing reinforcing steel, was not taken into account.

<sup>2)</sup>  $l_{v,max}$  is limited to 1000 mm, see ETA-20/0200

The specified design load  $N_{Rd}$  (End anchoring, Overlapping joints) can be converted to further concrete classes, while maintaining the previously accepted boundary conditions and anchorage lengths  $l_{bd}$  or lap length  $l_0$ , with the approach as follows:

$$N_{Rd,con} = \min(N_{Rd,s}; N_{Rd} * f_{bd,con} - \text{Factor} * k_b - \text{Factor}) \text{ [kN]}$$

The conversion factor  $f_{bd,con}$ , with the corresponding reduction factor  $k_b$ , can be taken from the following table depending on the drilling method, the concrete class and the diameter of the rebar:

Hammer drilling (HD), compressed air drilling (CD), hollow drill bit system (HDB)												
Rebar Ø	Ø8 to Ø32 mm			Ø 34 mm			Ø 36 mm			Ø 40 mm		
	$f_{bd}$	$f_{bd,con}$ - Factor	$k_b$ - Factor	$f_{bd}$	$f_{bd,con}$ - Factor	$k_b$ - Factor	$f_{bd}$	$f_{bd,con}$ - Factor	$k_b$ - Factor	$f_{bd}$	$f_{bd,con}$ - Factor	$k_b$ - Factor
[-]	[N/mm <sup>2</sup> ]	[-]	[-]	[N/mm <sup>2</sup> ]	[-]	[-]	[N/mm <sup>2</sup> ]	[-]	[-]	[N/mm <sup>2</sup> ]	[-]	[-]
C12/15	1,6	0,70	1,00	1,6	0,70	1,00	1,5	0,68	1,00	1,5	0,71	1,00
C16/20	2,0	0,87	1,00	2,0	0,87	1,00	1,9	0,86	1,00	1,8	0,86	1,00
C20/25	2,3	1,00	1,00	2,3	1,00	1,00	2,2	1,00	1,00	2,1	1,00	1,00
C25/30	2,7	1,17	1,00	2,6	1,13	1,00	2,6	1,18	1,00	2,5	1,19	1,00
C30/37	3,0	1,30	1,00	2,9	1,26	1,00	2,9	1,32	1,00	2,8	1,33	1,00
C35/45	3,4	1,48	1,00	3,3	1,43	1,00	3,3	1,50	1,00	3,1	1,48	1,00
C40/50	3,7	1,61	1,00	3,6	1,57	1,00	3,6	1,64	1,00	3,4	1,62	1,00
C45/55	4,0	1,74	1,00	3,9	1,70	1,00	3,8	1,73	1,00	3,7	1,76	1,00
C50/60	4,3	1,87	1,00	4,2	1,83	1,00	4,1	1,86	1,00	4,0	1,90	1,00



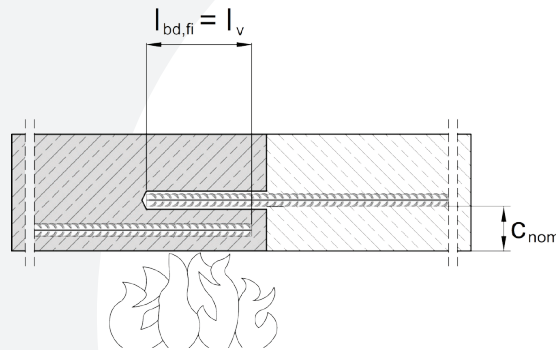
Diamond drilling (DD)												
Rebar Ø	Ø8 to Ø32 mm			Ø 34 mm			Ø 36 mm			Ø 40 mm		
Concrete class	$f_{bd}$	$f_{bd,con}$ - Factor	$k_b$ - Factor	$f_{bd}$	$f_{bd,con}$ - Factor	$k_b$ - Factor	$f_{bd}$	$f_{bd,con}$ - Factor	$k_b$ - Factor	$f_{bd}$	$f_{bd,con}$ - Factor	$k_b$ - Factor
[-]	[N/mm <sup>2</sup> ]	[-]	[-]	[N/mm <sup>2</sup> ]	[-]	[-]	[N/mm <sup>2</sup> ]	[-]	[-]	[N/mm <sup>2</sup> ]	[-]	[-]
C12/15	1,6	0,70	1,00	1,6	0,70	1,00	1,5	0,68	1,00	1,5	0,71	1,00
C16/20	2,0	0,87	1,00	2,0	0,87	1,00	1,9	0,86	1,00	1,8	0,86	1,00
C20/25	2,3	1,00	1,00	2,3	1,00	1,00	2,2	1,00	1,00	2,1	1,00	1,00
C25/30	2,7	1,17	1,00	2,6	1,13	1,00	2,6	1,18	1,00	2,5	1,19	1,00
C30/37	2,7	1,17	0,90	2,6	1,13	0,90	2,6	1,18	0,90	2,5	1,19	0,90
C35/45	2,7	1,17	0,79	2,6	1,13	0,79	2,6	1,18	0,79	2,5	1,19	0,79
C40/50	2,7	1,17	0,73	2,6	1,13	0,73	2,6	1,18	0,73	2,5	1,19	0,73
C45/55	2,7	1,17	0,68	2,6	1,13	0,68	2,6	1,18	0,68	2,5	1,19	0,68
C50/60	2,7	1,17	0,63	2,6	1,13	0,63	2,6	1,18	0,63	2,5	1,19	0,63



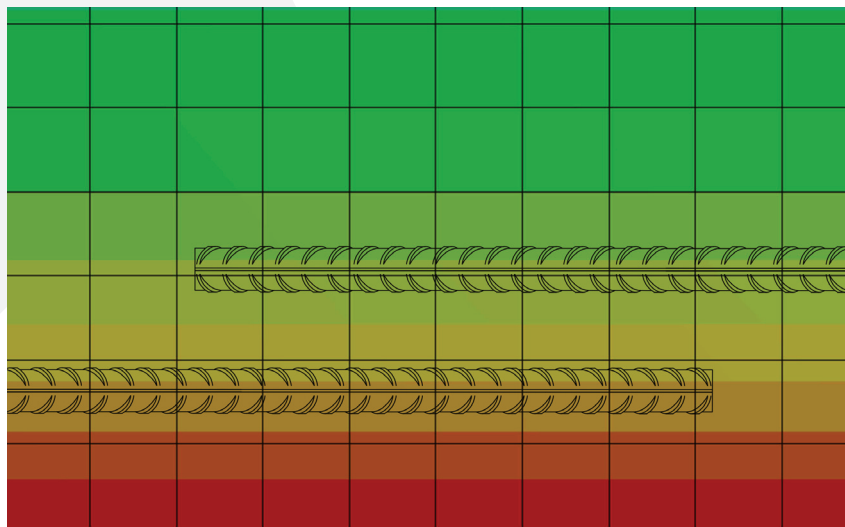
## Fire resistance - Overlapping joints

The present tables are supplying the mean reduction factor  $\bar{k}_{\theta(x)}$ , needed for determining the design bond strength  $f_{bd,fi}$  of post-installed rebar connections under fire exposure in a fire-resistance grating.

The specified mean reduction factor  $\bar{k}_{\theta(x)}$  is valid for slab to slab connections (overlapping joints), where the lower surface is exposed perpendicular to fire (one side), the temperature is uniform. Therefore the bond resistance is uniform along the bond also and depends on the concrete cover and the duration of the fire.



The heat development of structural members is calculated by a fire model, based on the standard uniform-temperature-time-curve (UTTC) acc. to ISO 834-1 and tries to simulate a real fire. Below the calculated heat distribution of a slab after a temperature impact of 14400 sec. (240min) for the fire-resistance grade R240.



The effect of heat on the bond strength of the mortar was determined by tests and is expressed by the reduction factor  $k_{b,fi}(\theta)$  given in the ETA-20/0200.



The calculation of the required design lap length  $l_0$  shall be carried out in accordance with EN 1992-1-1:2004+AC:2010, section 8.7.3 and the provisions of the ETA-20/0200 shall be met. The design value of the bond strength  $f_{bd,fi}$  under fire exposure has to be calculated by the following equation:

$$f_{bd,fi} = \bar{k}_{\Theta(x)} * f_{bd,PIR} * \gamma_c / \gamma_{M,fi} * f_{bd,fi,con} \leq f_{bd,PIR}$$

with:

- $f_{bd,fi}$  = Design value of the bond strength under fire exposure in N/mm<sup>2</sup>
- $\bar{k}_{\Theta(x)}$  = Mean reduction factor under fire exposure as a function of the temperature profile, given in the tables below
- $f_{bd,PIR}$  = Design value of the bond strength in cold condition acc. ETA-20/0200, tab. C2 depending on concrete class, rebar diameter, drilling method and bonding range acc. EN 1992-1-1 in N/mm<sup>2</sup>
- $\gamma_c$  = Partial safety factor of concrete acc. EN 1992-1-1; 1,5 in absence of national regulation
- $\gamma_{M,fi}$  = Partial safety factor of fire exposure acc. EN 1992-1-2; 1,0 in absence of national regulation
- $f_{bd,fi,con}$  = Conversion factor taking into account the influence of the concrete class

The mean reduction factor  $\bar{k}_{\Theta(x)}$  for slab to slab connections with rebar Ø8 - Ø32 mm and fire at 30, 60, 90, 120, 180 or 240 min is given for a concrete cover  $c_{nom}$  in the present table and valid for good bond conditions only:

Overlapping joint												
Rebar Ø8 - Ø40 mm	Mean reduction factor under fire exposure $\bar{k}_{\Theta(x)}$ <sup>2)</sup>											
	Fire-resistance grading											
$c_{nom}$ <sup>1)</sup>	R30	R60	R90	R120	R180	R240						
[mm]	[-]	[-]	[-]	[-]	[-]	[-]						
10	0,00	0,00	0,00	0,00	0,00	0,00						
15												
20												
25												
30												
35												
40	0,20	0,27	0,35	0,45	0,57	0,71						
45												
50												
55												
60												
65												
70												
75												
50							0,71	0,17				
55												
60												
65												
70												
75												



Overlapping joint						
Rebar Ø8 - Ø40 mm	Mean reduction factor under fire exposure $\bar{k}_{\theta(x)}$ <sup>2)</sup>					
	Fire-resistance grading					
$c_{nom}$ <sup>1)</sup>	R30	R60	R90	R120	R180	R240
[mm]	[-]	[-]	[-]	[-]	[-]	[-]
80	0,85	0,21	0,00	0,00	0,00	0,00
85	1,00	0,25				
90	1,00	0,29				
95	1,00	0,35				
100	1,00	0,41	0,19			
105	1,00	0,47	0,22			
110	1,00	0,56	0,25			
115	1,00	0,64	0,29	0,17		
120	1,00	0,75	0,34	0,20		
125	1,00	0,85	0,38	0,22		
130	1,00	0,97	0,44	0,26		
135	1,00	1,00	0,51	0,29		
140	1,00	1,00	0,57	0,33		
145	1,00	1,00	0,65	0,38		
150	1,00	1,00	0,73	0,43	0,20	
155	1,00	1,00	0,82	0,47	0,22	
160	1,00	1,00	0,94	0,53	0,25	
165	1,00	1,00	1,00	0,60	0,27	
170	1,00	1,00	1,00	0,67	0,30	0,18
175	1,00	1,00	1,00	0,73	0,34	0,20
180	1,00	1,00	1,00	0,80	0,37	0,22

<sup>1)</sup>  $c_{nom}$  = concrete cover

<sup>2)</sup>  $\bar{k}_{\theta(x)}$  = Mean reduction factor over the embedment depth of the rebar as a function of the temperature profile

Intermediate values of  $\bar{k}_{\theta(x)}$  may be interpolated linearly. Extrapolation is not permitted.



The bond strength  $f_{bd,PIR}$  depends on the concrete class and rebar diameter as well as the corresponding conversion factor  $f_{bd,fi,con}$  and can be found in the following table:

Hammer drilling (HD), compressed air drilling (CD), hollow drill bit system (HDB)			
Concrete class	Ø-Rebar	$f_{bd,PIR}$ - Factor	$f_{bd,fi,con}$ - Factor
[-]	[mm]	[N/mm <sup>2</sup> ]	[-]
C12/15	Ø8 - Ø34	1,6	1,44
	Ø36, Ø40	1,5	1,53
C16/20	Ø8 - Ø34	2,0	1,15
	Ø36	1,9	1,21
	Ø40	1,8	1,28
C20/25	Ø8 - Ø34	2,3	1,00
	Ø36	2,2	1,05
	Ø40	2,1	1,10
C25/30	Ø8 - Ø32	2,7	0,85
	Ø34, Ø36	2,6	0,88
	Ø40	2,5	0,92
C30/37	Ø8 - Ø32	3,0	0,77
	Ø34, Ø36	2,9	0,79
	Ø40	2,8	0,82
C35/45	Ø8 - Ø32	3,4	0,68
	Ø34, Ø36	3,3	0,70
	Ø40	3,1	0,74
C40/50	Ø8 - Ø32	3,7	0,62
	Ø34, Ø36	3,6	0,64
	Ø40	3,4	0,68
C45/55	Ø8 - Ø32	4,0	0,58
	Ø34	3,9	0,59
	Ø36	3,8	0,61
	Ø40	3,7	0,62
C50/60	Ø8 - Ø32	4,3	0,53
	Ø34	4,2	0,55
	Ø36	4,1	0,56
	Ø40	4,0	0,58
Diamond drilling (DD)			
C12/15	Ø8 - Ø34	1,6	1,44
	Ø36, Ø40	1,5	1,53
C16/20	Ø8 - Ø34	2,0	1,15
	Ø36	1,9	1,21
	Ø40	1,8	1,28
C20/25	Ø8 - Ø34	2,3	1,00
	Ø36	2,2	1,05
	Ø40	2,1	1,10
C25/30	Ø8 - Ø32	2,7	0,85
C30/37	Ø34, Ø36	2,6	0,88
C35/45			
C40/50	Ø40	2,5	0,92
C45/55			
C50/60			



The given values does not deal with the mechanical design at ambient temperature, these shall be done in addition and related to ETA-20/0200.

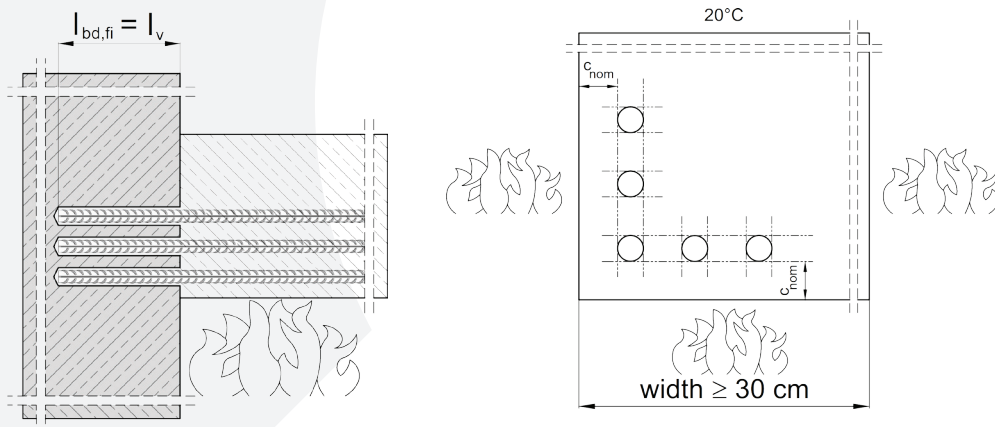
Post-installed rebar connections shall be designed in ambient temperature conditions before being designed in fire conditions.

The partial safety factor for actions can be assumed to be  $\gamma_F = 1,0$  for determining recommended loads.

### Beam to wall connection (anchoring)

The present table is supplying the mean reduction factor  $\bar{k}_{\theta(x)}$ , needed for determining the design bond strength  $f_{bd,fi}$  of post-installed rebar connections under fire exposure in a fire-resistance rating.

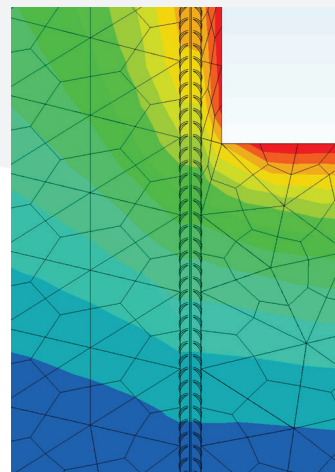
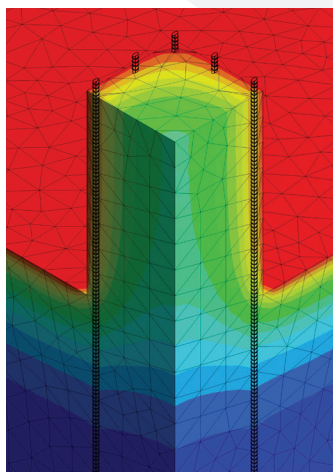
The mean reduction factor  $\bar{k}_{\theta(x)}$  is valid for wall to beam or foundation to column connections, where the rebar is bonded inside the wall / foundation, there is a temperature gradient in the thickness of the wall respectively foundation if the beam or column is exposed to fire (three sides).



The temperature along the bonding interface is not uniform and depends on the fire duration, the anchoring length and the concrete cover of the rebar inside the beam (which acts as a protection against thermal exposure). Therefore, the temperature profiles along the bond are determined for each fire duration, for each bonded length and for the concrete covers inside the beam of  $c_{nom} = 10, 20, 30$  and  $40$  mm.

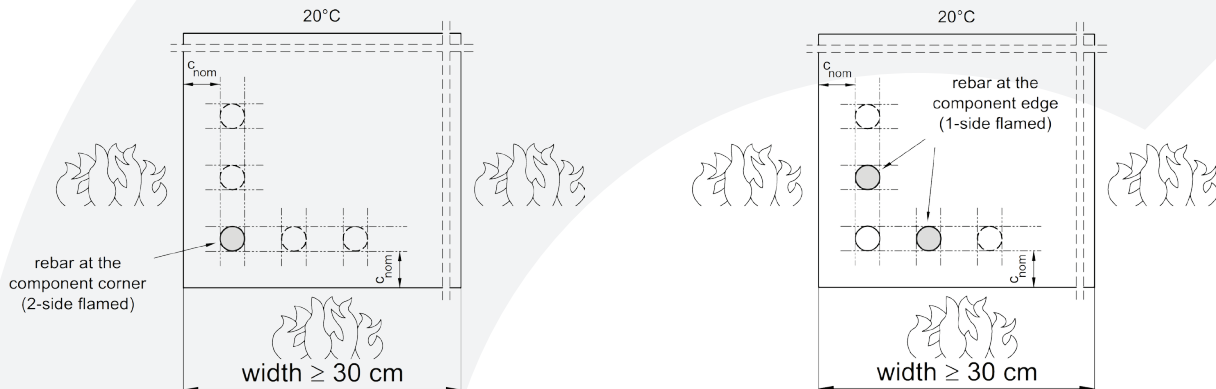
The given mean reduction factor  $\bar{k}_{\theta(x)}$  is a mean value as a function of the temperature profile along the bonding length.

The calculated model of the fire is based on the standard uniform-temperature-time-curve (UTTC) acc. to ISO 834-1 and tries to simulate the heat development of structural members at a real fire. Below the calculated heat distribution of a beam / column and wall / foundation after a temperature impact of 14400 sec. (240min) for the fire-resistance grade R240.





The fire model determines the heat distribution for rebars at the component corner (2 sides flamed) and at the component edge (1 side flamed).



The effect of heat on the bond strength of the mortar was determined by tests and is expressed by the reduction factor  $k_{b,fi}(\theta)$  given in the ETA-20/0200.

The calculation of the required design lap length  $l_0$  shall be carried out in accordance with EN 1992-1-1:2004+AC:2010, section 8.7.3 and the provisions of the ETA-20/0200 shall be met.

The design value of the bond strength  $f_{bd,fi}$  under fire exposure has to be calculated by the following equation:

$$f_{bd,fi} = \bar{k}_{\theta(x)} * f_{bd,PIR} * \gamma_c / \gamma_{M,fi} * f_{bd,fi,con} \leq f_{bd,PIR}$$

with:

- $f_{bd,fi}$  = Design value of the bond strength under fire exposure in N/mm<sup>2</sup>
- $\bar{k}_{\theta(x)}$  = Mean reduction factor under fire exposure as a function of the temperature profile, given in the tables below
- $f_{bd,PIR}$  = Design value of the bond strength in cold condition acc. ETA-20/0200, tab. C2 depending on concrete class, rebar diameter, drilling method and bonding range acc. EN 1992-1-1 in N/mm<sup>2</sup>
- $\gamma_c$  = Partial safety factor of concrete acc. EN 1992-1-1; 1,5 in absence of national regulation
- $\gamma_{M,fi}$  = Partial safety factor of fire exposure acc. EN 1992-1-2; 1,0 in absence of national regulation
- $f_{bd,fi,con}$  = Conversion factor taking into account the influence of the concrete class

The mean reduction factor  $\bar{k}_{\theta(x)}$  for e.g. beam on wall or column on slab applications for concrete covers of  $c_{nom} = 10, 20, 30$  and  $40$  mm with the corresponding diameter of the rebar and fire-resistance grading at 30, 60, 90, 120, 180 or 240 min is given for a rebar at the edge (1 side flamed) or at the corner (2 sides flamed) in the following tables and valid for good bond conditions:



Endanchoring - Mean reduction factor under fire exposure $\bar{k}_{\theta(x)}$ <sup>3)</sup>												
$c_{nom} = 10$ mm <sup>1)</sup>	Rebar at the edge (1 side flamed)						Rebar at the corner (2 sides flamed)					
Rebar Ø8, Ø10	Fire-resistance grading						Fire-resistance grading					
$l_v$ <sup>2)</sup>	R30	R60	R90	R120	R180	R240	R30	R60	R90	R120	R180	R240
[mm]	[-]	[-]	[-]	[-]	[-]	[-]	[-]	[-]	[-]	[-]	[-]	[-]
80	0,24	0,08	0,05	0,03	0,02	0,02	0,11	0,04	0,02	0,02	0,01	0,01
90	0,31	0,10	0,06	0,04	0,03	0,02	0,17	0,06	0,03	0,02	0,02	0,01
100	0,38	0,13	0,07	0,05	0,03	0,02	0,23	0,07	0,04	0,03	0,02	0,01
110	0,44	0,16	0,09	0,06	0,04	0,03	0,30	0,10	0,05	0,04	0,02	0,02
120	0,49	0,20	0,11	0,07	0,04	0,03	0,36	0,12	0,07	0,05	0,03	0,02
130	0,53	0,26	0,14	0,09	0,05	0,04	0,41	0,15	0,09	0,06	0,04	0,03
140	0,56	0,31	0,17	0,11	0,06	0,04	0,45	0,19	0,11	0,07	0,04	0,03
150	0,59	0,36	0,21	0,13	0,07	0,05	0,49	0,24	0,14	0,09	0,05	0,04
160	0,61	0,40	0,25	0,16	0,08	0,05	0,52	0,28	0,18	0,11	0,06	0,04
170	0,64	0,43	0,30	0,19	0,09	0,06	0,55	0,33	0,23	0,14	0,07	0,05
180	0,66	0,46	0,34	0,22	0,11	0,07	0,57	0,36	0,27	0,17	0,08	0,06
190	0,68	0,49	0,37	0,26	0,13	0,08	0,60	0,40	0,31	0,20	0,10	0,06
200	0,69	0,52	0,40	0,30	0,15	0,09	0,62	0,43	0,34	0,24	0,12	0,07
210	0,71	0,54	0,43	0,33	0,17	0,10	0,64	0,45	0,37	0,28	0,14	0,09
220	0,72	0,56	0,46	0,36	0,20	0,12	0,65	0,48	0,40	0,31	0,16	0,10
230	0,73	0,58	0,48	0,39	0,23	0,14	0,67	0,50	0,43	0,34	0,19	0,11
240	0,74	0,60	0,50	0,42	0,26	0,15	0,68	0,52	0,45	0,37	0,22	0,13
250	0,75	0,61	0,52	0,44	0,29	0,17	0,69	0,54	0,47	0,39	0,25	0,15
260	0,76	0,63	0,54	0,46	0,32	0,20	0,71	0,56	0,49	0,42	0,28	0,17
270	0,77	0,64	0,56	0,48	0,34	0,22	0,72	0,58	0,51	0,44	0,31	0,20
280	0,78	0,66	0,57	0,50	0,37	0,25	0,73	0,59	0,53	0,46	0,33	0,22
290	0,79	0,67	0,59	0,52	0,39	0,27	0,74	0,60	0,55	0,48	0,36	0,25
300	0,79	0,68	0,60	0,53	0,41	0,30	0,74	0,62	0,56	0,50	0,38	0,27
310	0,80	0,69	0,62	0,55	0,43	0,32	0,75	0,63	0,58	0,51	0,40	0,30
320	0,81	0,70	0,63	0,56	0,45	0,34	0,76	0,64	0,59	0,53	0,42	0,32
350	0,82	0,72	0,66	0,60	0,49	0,40	0,78	0,67	0,62	0,57	0,47	0,38
400	0,85	0,76	0,70	0,65	0,56	0,47	0,81	0,71	0,67	0,62	0,53	0,45
450	0,86	0,79	0,74	0,69	0,61	0,53	0,83	0,75	0,71	0,66	0,59	0,52
500	0,88	0,81	0,76	0,72	0,65	0,58	0,85	0,77	0,74	0,70	0,63	0,56
550	0,89	0,82	0,78	0,75	0,68	0,62	0,86	0,79	0,76	0,72	0,66	0,60
600	0,90	0,84	0,80	0,77	0,70	0,65	0,87	0,81	0,78	0,75	0,69	0,64
700	0,91	0,86	0,83	0,80	0,75	0,70	0,89	0,84	0,81	0,78	0,73	0,69
800	0,92	0,88	0,85	0,83	0,78	0,74	0,90	0,86	0,84	0,81	0,77	0,73
900	0,93	0,89	0,87	0,84	0,80	0,77	0,91	0,87	0,85	0,83	0,79	0,76
1000	0,94	0,90	0,88	0,86	0,82	0,79	0,92	0,89	0,87	0,85	0,81	0,78

<sup>1)</sup>  $c_{nom}$  = concrete cover

<sup>2)</sup>  $l_v$  = embedment length of the bar in the concrete

<sup>3)</sup>  $\bar{k}_{\theta(x)}$  = Mean reduction factor over the embedment depth of the rebar as a function of the temperature profile

Intermediate values of  $\bar{k}_{\theta(x)}$  may be interpolated linearly. Extrapolation is not permitted.



Endanchoring - Mean reduction factor under fire exposure $\bar{k}_{\theta(x)}$ <sup>3)</sup>												
$c_{nom} = 20$ mm <sup>1)</sup>	Rebar at the edge (1 side flamed)						Rebar at the corner (2 sides flamed)					
Rebar Ø8 - Ø20	Fire-resistance grading						Fire-resistance grading					
$l_v$ <sup>2)</sup>	R30	R60	R90	R120	R180	R240	R30	R60	R90	R120	R180	R240
[mm]	[-]	[-]	[-]	[-]	[-]	[-]	[-]	[-]	[-]	[-]	[-]	[-]
80	0,35	0,13	0,07	0,05	0,03	0,02	0,14	0,05	0,03	0,02	0,02	0,01
90	0,40	0,15	0,08	0,06	0,04	0,03	0,18	0,06	0,04	0,03	0,02	0,01
100	0,46	0,17	0,10	0,07	0,04	0,03	0,23	0,08	0,05	0,03	0,02	0,02
110	0,51	0,19	0,11	0,07	0,04	0,03	0,28	0,10	0,06	0,04	0,03	0,02
120	0,55	0,22	0,12	0,08	0,05	0,03	0,34	0,12	0,07	0,05	0,03	0,02
130	0,59	0,25	0,14	0,09	0,05	0,04	0,39	0,14	0,08	0,06	0,03	0,03
140	0,62	0,29	0,16	0,10	0,06	0,04	0,43	0,17	0,09	0,06	0,04	0,03
150	0,64	0,33	0,18	0,12	0,07	0,05	0,47	0,20	0,11	0,07	0,05	0,03
160	0,66	0,37	0,20	0,13	0,07	0,05	0,50	0,24	0,13	0,09	0,05	0,04
170	0,68	0,41	0,23	0,15	0,08	0,06	0,53	0,28	0,15	0,10	0,06	0,04
180	0,70	0,44	0,26	0,17	0,09	0,06	0,56	0,32	0,18	0,11	0,07	0,05
190	0,72	0,47	0,30	0,19	0,10	0,07	0,58	0,36	0,21	0,13	0,08	0,05
200	0,73	0,50	0,34	0,21	0,11	0,07	0,60	0,39	0,24	0,15	0,09	0,06
210	0,74	0,52	0,37	0,24	0,13	0,08	0,62	0,42	0,28	0,18	0,10	0,07
220	0,76	0,55	0,40	0,27	0,14	0,09	0,64	0,44	0,31	0,20	0,11	0,07
230	0,77	0,57	0,42	0,31	0,16	0,10	0,65	0,47	0,34	0,24	0,13	0,08
240	0,78	0,58	0,45	0,34	0,18	0,11	0,67	0,49	0,37	0,27	0,14	0,09
250	0,79	0,60	0,47	0,36	0,20	0,12	0,68	0,51	0,39	0,30	0,16	0,10
260	0,79	0,62	0,49	0,39	0,22	0,14	0,69	0,53	0,42	0,32	0,18	0,12
270	0,80	0,63	0,51	0,41	0,25	0,15	0,71	0,55	0,44	0,35	0,21	0,13
280	0,81	0,64	0,53	0,43	0,28	0,17	0,72	0,56	0,46	0,37	0,24	0,15
290	0,81	0,66	0,54	0,45	0,30	0,19	0,73	0,58	0,48	0,39	0,26	0,17
300	0,82	0,67	0,56	0,47	0,32	0,21	0,74	0,59	0,49	0,41	0,29	0,19
310	0,83	0,68	0,57	0,49	0,35	0,23	0,74	0,61	0,51	0,43	0,31	0,21
320	0,83	0,69	0,58	0,50	0,37	0,26	0,75	0,62	0,52	0,45	0,33	0,23
350	0,85	0,71	0,62	0,54	0,42	0,32	0,77	0,65	0,57	0,50	0,39	0,30
400	0,87	0,75	0,67	0,60	0,49	0,41	0,80	0,69	0,62	0,56	0,47	0,39
500	0,89	0,80	0,73	0,68	0,59	0,52	0,84	0,76	0,70	0,65	0,57	0,51
600	0,91	0,83	0,78	0,73	0,66	0,60	0,87	0,80	0,75	0,71	0,64	0,59
700	0,92	0,86	0,81	0,77	0,71	0,66	0,89	0,83	0,78	0,75	0,69	0,65
800	0,93	0,87	0,83	0,80	0,75	0,70	0,90	0,85	0,81	0,78	0,73	0,69
900	0,94	0,89	0,85	0,82	0,77	0,74	0,91	0,86	0,83	0,80	0,76	0,73
1000	0,95	0,90	0,87	0,84	0,80	0,76	0,92	0,88	0,85	0,82	0,79	0,75
1500	0,96	0,93	0,91	0,89	0,86	0,84	0,95	0,92	0,90	0,88	0,86	0,84
2000	0,97	0,95	0,93	0,92	0,90	0,88	0,96	0,94	0,92	0,91	0,89	0,88

<sup>1)</sup>  $c_{nom}$  = concrete cover

<sup>2)</sup>  $l_v$  = embedment length of the bar in the concrete

<sup>3)</sup>  $\bar{k}_{\theta(x)}$  = Mean reduction factor over the embedment depth of the rebar as a function of the temperature profile

Intermediate values of  $\bar{k}_{\theta(x)}$  may be interpolated linearly. Extrapolation is not permitted.



Endanchoring - Mean reduction factor under fire exposure $\bar{k}_{\theta(x)}$ <sup>3)</sup>												
$c_{nom} = 30$ mm <sup>1)</sup>	Rebar at the edge (1 side flamed)						Rebar at the corner (2 sides flamed)					
Rebar Ø8 - Ø28	Fire-resistance grading						Fire-resistance grading					
$l_v$ <sup>2)</sup>	R30	R60	R90	R120	R180	R240	R30	R60	R90	R120	R180	R240
[mm]	[-]	[-]	[-]	[-]	[-]	[-]	[-]	[-]	[-]	[-]	[-]	[-]
80	0,58	0,19	0,10	0,07	0,04	0,03	0,30	0,10	0,06	0,04	0,03	0,02
90	0,63	0,21	0,11	0,08	0,04	0,03	0,34	0,11	0,06	0,05	0,03	0,02
100	0,67	0,23	0,12	0,08	0,05	0,03	0,39	0,12	0,07	0,05	0,03	0,02
110	0,70	0,26	0,14	0,09	0,05	0,04	0,44	0,14	0,08	0,06	0,04	0,03
120	0,72	0,28	0,15	0,10	0,06	0,04	0,49	0,16	0,09	0,06	0,04	0,03
130	0,74	0,31	0,16	0,11	0,06	0,04	0,53	0,18	0,10	0,07	0,04	0,03
140	0,76	0,35	0,18	0,12	0,06	0,04	0,56	0,20	0,11	0,08	0,05	0,03
150	0,78	0,38	0,20	0,13	0,07	0,05	0,59	0,23	0,12	0,08	0,05	0,04
160	0,79	0,42	0,22	0,14	0,08	0,05	0,62	0,26	0,14	0,09	0,06	0,04
170	0,80	0,46	0,24	0,15	0,08	0,06	0,64	0,30	0,16	0,10	0,06	0,04
180	0,82	0,49	0,27	0,17	0,09	0,06	0,66	0,34	0,18	0,12	0,07	0,05
190	0,83	0,51	0,29	0,18	0,10	0,06	0,68	0,37	0,20	0,13	0,08	0,05
200	0,83	0,54	0,33	0,20	0,11	0,07	0,69	0,40	0,23	0,15	0,08	0,06
210	0,84	0,56	0,36	0,22	0,12	0,08	0,71	0,43	0,25	0,16	0,09	0,06
220	0,85	0,58	0,39	0,25	0,13	0,08	0,72	0,46	0,29	0,18	0,10	0,07
230	0,86	0,60	0,41	0,27	0,14	0,09	0,73	0,48	0,32	0,21	0,11	0,08
240	0,86	0,61	0,44	0,30	0,15	0,10	0,74	0,50	0,35	0,23	0,13	0,08
250	0,87	0,63	0,46	0,33	0,17	0,11	0,76	0,52	0,37	0,26	0,14	0,09
260	0,87	0,64	0,48	0,35	0,18	0,12	0,76	0,54	0,40	0,29	0,15	0,10
270	0,88	0,66	0,50	0,38	0,20	0,13	0,77	0,56	0,42	0,31	0,17	0,11
280	0,88	0,67	0,52	0,40	0,22	0,14	0,78	0,57	0,44	0,34	0,19	0,12
290	0,89	0,68	0,53	0,42	0,24	0,15	0,79	0,59	0,46	0,36	0,21	0,14
300	0,89	0,69	0,55	0,44	0,27	0,16	0,80	0,60	0,48	0,38	0,23	0,15
310	0,89	0,70	0,56	0,46	0,29	0,18	0,80	0,61	0,49	0,40	0,26	0,16
320	0,90	0,71	0,58	0,47	0,31	0,20	0,81	0,63	0,51	0,42	0,28	0,18
350	0,91	0,74	0,61	0,52	0,37	0,25	0,83	0,66	0,55	0,47	0,34	0,24
400	0,92	0,77	0,66	0,58	0,45	0,35	0,85	0,70	0,61	0,54	0,43	0,34
500	0,93	0,81	0,73	0,66	0,56	0,48	0,88	0,76	0,69	0,63	0,54	0,47
600	0,94	0,85	0,78	0,72	0,63	0,56	0,90	0,80	0,74	0,69	0,62	0,56
700	0,95	0,87	0,81	0,76	0,69	0,63	0,91	0,83	0,78	0,74	0,67	0,62
800	0,96	0,88	0,83	0,79	0,72	0,67	0,92	0,85	0,80	0,77	0,71	0,67
900	0,96	0,90	0,85	0,81	0,76	0,71	0,93	0,87	0,83	0,79	0,74	0,70
1000	0,97	0,91	0,87	0,83	0,78	0,74	0,94	0,88	0,84	0,81	0,77	0,73
1500	0,98	0,94	0,91	0,89	0,85	0,83	0,96	0,92	0,90	0,88	0,85	0,82
2000	0,98	0,95	0,93	0,92	0,89	0,87	0,97	0,94	0,92	0,91	0,89	0,87

<sup>1)</sup>  $c_{nom}$  = concrete cover

<sup>2)</sup>  $l_v$  = embedment length of the bar in the concrete

<sup>3)</sup>  $\bar{k}_{\theta(x)}$  = Mean reduction factor over the embedment depth of the rebar as a function of the temperature profile

Intermediate values of  $\bar{k}_{\theta(x)}$  may be interpolated linearly. Extrapolation is not permitted.



Endanchoring - Mean reduction factor under fire exposure $\bar{k}_{\theta(x)}$ <sup>3)</sup>												
$c_{nom} = 40$ mm <sup>1)</sup>	Rebar at the edge (1 side flamed)						Rebar at the corner (2 sides flamed)					
Rebar Ø8 - Ø40	Fire-resistance grading						Fire-resistance grading					
$l_v$ <sup>2)</sup>	R30	R60	R90	R120	R180	R240	R30	R60	R90	R120	R180	R240
[mm]	[-]	[-]	[-]	[-]	[-]	[-]	[-]	[-]	[-]	[-]	[-]	[-]
80	0,86	0,28	0,14	0,09	0,05	0,03	0,57	0,16	0,09	0,06	0,04	0,03
90	0,88	0,30	0,15	0,09	0,05	0,04	0,61	0,17	0,09	0,06	0,04	0,03
100	0,89	0,32	0,16	0,10	0,06	0,04	0,65	0,19	0,10	0,07	0,04	0,03
110	0,90	0,34	0,17	0,11	0,06	0,04	0,68	0,21	0,11	0,07	0,05	0,03
120	0,91	0,37	0,18	0,11	0,06	0,04	0,71	0,23	0,12	0,08	0,05	0,04
130	0,91	0,40	0,20	0,12	0,07	0,04	0,73	0,25	0,13	0,09	0,05	0,04
140	0,92	0,43	0,21	0,13	0,07	0,05	0,75	0,27	0,14	0,09	0,05	0,04
150	0,93	0,46	0,22	0,14	0,07	0,05	0,77	0,30	0,15	0,10	0,06	0,04
160	0,93	0,49	0,24	0,15	0,08	0,05	0,78	0,33	0,17	0,11	0,06	0,04
170	0,93	0,52	0,26	0,16	0,08	0,06	0,80	0,36	0,18	0,12	0,07	0,05
180	0,94	0,55	0,28	0,17	0,09	0,06	0,81	0,39	0,20	0,13	0,07	0,05
190	0,94	0,57	0,30	0,18	0,09	0,06	0,82	0,42	0,22	0,14	0,08	0,05
200	0,94	0,59	0,33	0,20	0,10	0,07	0,83	0,45	0,24	0,15	0,08	0,06
210	0,95	0,61	0,35	0,21	0,11	0,07	0,83	0,48	0,26	0,17	0,09	0,06
220	0,95	0,63	0,38	0,23	0,12	0,07	0,84	0,50	0,29	0,18	0,10	0,07
230	0,95	0,65	0,41	0,25	0,12	0,08	0,85	0,52	0,31	0,20	0,11	0,07
240	0,95	0,66	0,43	0,26	0,13	0,08	0,85	0,54	0,34	0,21	0,11	0,08
250	0,96	0,68	0,45	0,28	0,14	0,09	0,86	0,56	0,37	0,23	0,12	0,08
260	0,96	0,69	0,47	0,31	0,15	0,10	0,87	0,58	0,39	0,25	0,13	0,09
270	0,96	0,70	0,49	0,33	0,16	0,10	0,87	0,60	0,41	0,28	0,15	0,10
280	0,96	0,71	0,51	0,35	0,18	0,11	0,88	0,61	0,44	0,30	0,16	0,10
290	0,96	0,72	0,53	0,38	0,19	0,12	0,88	0,62	0,45	0,33	0,17	0,11
300	0,96	0,73	0,54	0,40	0,20	0,13	0,88	0,64	0,47	0,35	0,19	0,12
310	0,96	0,74	0,56	0,42	0,22	0,13	0,89	0,65	0,49	0,37	0,20	0,13
320	0,97	0,75	0,57	0,43	0,23	0,14	0,89	0,66	0,51	0,39	0,22	0,14
350	0,97	0,77	0,61	0,48	0,29	0,18	0,90	0,69	0,55	0,44	0,28	0,17
400	0,97	0,80	0,66	0,55	0,38	0,25	0,91	0,73	0,60	0,51	0,37	0,25
500	0,98	0,84	0,73	0,64	0,50	0,40	0,93	0,78	0,68	0,61	0,49	0,40
600	0,98	0,86	0,77	0,70	0,59	0,50	0,94	0,82	0,74	0,67	0,58	0,50
700	0,98	0,88	0,80	0,74	0,64	0,57	0,95	0,84	0,77	0,72	0,64	0,57
800	0,99	0,90	0,83	0,77	0,69	0,62	0,96	0,86	0,80	0,76	0,68	0,62
900	0,99	0,91	0,85	0,80	0,72	0,66	0,96	0,88	0,82	0,78	0,72	0,67
1000	0,99	0,92	0,86	0,82	0,75	0,70	0,97	0,89	0,84	0,80	0,75	0,70
1500	0,99	0,95	0,91	0,88	0,83	0,80	0,98	0,93	0,89	0,87	0,83	0,80
2000	0,99	0,96	0,93	0,91	0,88	0,85	0,98	0,95	0,92	0,90	0,87	0,85

<sup>1)</sup>  $c_{nom}$  = concrete cover

<sup>2)</sup>  $l_v$  = embedment length of the bar in the concrete

<sup>3)</sup>  $\bar{k}_{\theta(x)}$  = Mean reduction factor over the embedment depth of the rebar as a function of the temperature profile

Intermediate values of  $\bar{k}_{\theta(x)}$  may be interpolated linearly. Extrapolation is not permitted.



The recommended load capacity  $f_{bd,PIR}$  depends on the drilling method, the concrete class and the reinforcement diameter with the corresponding conversion factor  $f_{bd,fi,con}$ . The values can be taken from the following tables for reinforcement bars at the component corner (2-sided flaming) and at the component edge (1-sided flaming):

Hammer drilling (HD), compressed air drilling (CD), hollow drill bit system (HDB)			
Concrete class	Ø-Rebar	$f_{bd,PIR}$ - Factor	$f_{bd,fi,con}$ - Factor
[-]	[mm]	[N/mm <sup>2</sup> ]	[-]
C12/15	Ø8 - Ø34	1,6	1,44
	Ø36, Ø40	1,5	1,53
C16/20	Ø8 - Ø34	2,0	1,15
	Ø36	1,9	1,21
	Ø40	1,8	1,28
C20/25	Ø8 - Ø34	2,3	1,00
	Ø36	2,2	1,05
	Ø40	2,1	1,10
C25/30	Ø8 - Ø32	2,7	0,85
	Ø34, Ø36	2,6	0,88
	Ø40	2,5	0,92
C30/37	Ø8 - Ø32	3,0	0,77
	Ø34, Ø36	2,9	0,79
	Ø40	2,8	0,82
C35/45	Ø8 - Ø32	3,4	0,68
	Ø34, Ø36	3,3	0,70
	Ø40	3,1	0,74
C40/50	Ø8 - Ø32	3,7	0,62
	Ø34, Ø36	3,6	0,64
	Ø40	3,4	0,68
C45/55	Ø8 - Ø32	4,0	0,58
	Ø34	3,9	0,59
	Ø36	3,8	0,61
	Ø40	3,7	0,62
C50/60	Ø8 - Ø32	4,3	0,53
	Ø34	4,2	0,55
	Ø36	4,1	0,56
	Ø40	4,0	0,58
Diamond drilling (DD)			
C12/15	Ø8 - Ø34	1,6	1,44
	Ø36, Ø40	1,5	1,53
C16/20	Ø8 - Ø34	2,0	1,15
	Ø36	1,9	1,21
	Ø40	1,8	1,28
C20/25	Ø8 - Ø34	2,3	1,00
	Ø36	2,2	1,05
	Ø40	2,1	1,10
C25/30 to C50/60	Ø8 - Ø32	2,7	0,85
	Ø34, Ø36	2,6	0,88
	Ø40	2,5	0,92



The given values does not deal with the mechanical design at ambient temperature, these shall be done in addition and related to ETA-20/0200.

Post-installed rebar connections shall be designed in ambient temperature conditions before being designed in fire conditions.

The bond resistance  $f_{bd,fi}$  shall not be applied for beam to beam connections.

The partial safety factor for actions can be assumed to be  $\gamma_F = 1.0$  for determining recommended loads.



## 4. Chemical resistance

Chemical Agent	Concentration	Resistant	Not resistant
Accumulator acid			X
Acetic acid	10%		X
Acetic acid	40%		X
Laitance		X	
Acetone	5%		X
Acetone	10%		X
Acetone	100%		X
Ammonia, aqueous solution	5%	X	
Ammonia, aqueous solution	32%		X
Aniline	100%		X
Beer	100%	X	
Chlorine	All	X	
Benzol	100%		X
Boric Acid, aqueous solution		X	
Calcium carbonate, suspended in water	All	X	
Calcium chloride, suspended in water		X	
Calcium hydroxide, suspended in water		X	
Chlorinated lime (Calcium hypochlorite)	10%		X
Carbon tetrachloride	100%	X	
Caustic soda solution	10%	X	
Caustic soda solution	40%	X	
Citric acid	10%		X
Citric acid	50%		X
Citric acid	All	X	
Chlorine water, swimming pool	All		X
Deminerlized water	All		X
Diesel oil	100%	X	
Ethyl alcohol, aqueous solution	100%		X
Ethyl alcohol, aqueous solution	50%		X
Formic acid	10%	X	
Formic acid	30%		X
Formic acid	100%		X
Formaldehyde, aqueous solution	20%	X	
Formaldehyde, aqueous solution	30%	X	
Freon		X	
Fuel Oil		X	
Gasoline (premium grade)	100%	X	
Glycol (Ethylene glycol)		X	
Hydraulic fluid	Conc.		X
Hydrochloric acid (Muriatic Acid)	Conc.		X
Hydrogen peroxide	10%		X
Hydrogen peroxide	30%		X
Isopropyl alcohol	100%		X
Lactic acid	10%		X
Lactic acid	All		X
Linseed oil	100%	X	
Lubricating oil	100%	X	
Magnesium chloride, aqueous solution	All	X	
Methanol	100%		X
Standard benzine			X
Motor oil (SAE 20 W-50)	100%	X	
Nitric acid	10%		X
Oleic acid	100%	X	
Perchloroethylene	100%	X	
Petroleum	100%	X	
Phenol, aqueous solution	8%		X

Results shown in the table are applicable to brief periods of chemical contact with full cured adhesive (e.g. temporary contact with adhesive during a spill).



Chemical Agent	Concentration	Resistant	Not resistant
Benzyl alcohol	100%		x
Phosphoric acid	85%	x	
Phosphoric acid	10%	x	
Potash lye (Potassium hydroxide)	10%	x	
Potash lye (Potassium hydroxide)	40%	x	
Potassium carbonate, aqueous solution	All	x	
Potassium chlorite, aqueous solution	All	x	
Potassium nitrate, aqueous solution	All	x	
Sea water, salty	All	x	
Sodium carbonate	All	x	
Sodium chloride, aqueous solution	All	x	
Sodium phosphate, aqueous solution	All	x	
Sodium silicate	All	x	
Sulfuric acid	10%		x
Sulfuric acid	30%		x
Sulfuric acid	70%		x
Tartaric acid	All	x	
Tetrachloroethylene	100%	x	
Toluene			x
Trichloroethylene	100%		x
Turpentine	100%	x	

Results shown in the table are applicable to brief periods of chemical contact with full cured adhesive (e.g. temporary contact with adhesive during a spill).